

# Pantry Appeal Info Sheet



**Your donations  
help others!**

## **WHAT IS THE PANTRY APPEAL?**

The Pantry Appeal is held year round and seeks donations of non-perishable food, essential living items and funds. The items collected throughout the appeal are distributed to families and individuals in the community who are in need of emergency assistance.

The Pantry Appeal collections are supported by local schools, churches, community groups and businesses in addition to individual volunteers who run shopping centres stalls across Canberra and regional towns in NSW.

## **FOR MORE INFORMATION**

Contact (02) 6278 8400 or [supporters@anglicare.com.au](mailto:supporters@anglicare.com.au)

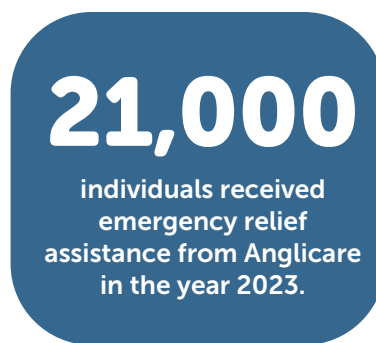
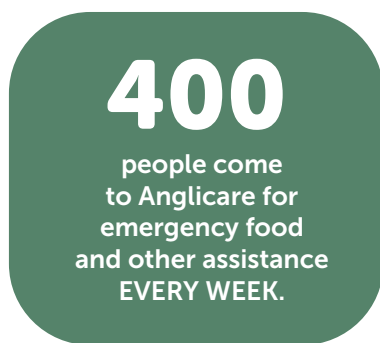
# WHY DOES ANGLICARE NEED TO COLLECT FOOD?

## IN AUSTRALIA...

\*Source: The Australian Council of Social Services, 2024



## IN OUR COMMUNITY..



## WHAT SHOULD WE DONATE?

Throughout the Pantry Appeal we collect non-perishable food such as tinned foods, cereal, school snacks and long life milk. We are also collecting toiletries (including toothbrushes,

soap, feminine hygiene products) and baby needs (including nappies). A full list of suggested items are on our website ([www.anglicare.com.au/pantry](http://www.anglicare.com.au/pantry)).



TOILETRIES



BREAKFAST FOOD + UHT MILK



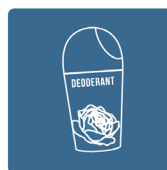
PASTA/RICE + QUICK MEALS



SCHOOL LUNCH SPREADS/SNACKS



TINNED FOOD



WOMENS NEEDS



NAPPIES + BABY FOOD



CASH DONATION

## WHERE DO OUR DONATIONS GO?

The collected items go to St John's Care in Reid. A team of volunteers then organise the donations and once sorted, many donations are distributed directly from St John's Care to those in need.

The donations collected during the Pantry Appeal stock the pantry at St John's Care for nearly the whole year! Put simply, we couldn't help people in need without the generous donations received during Pantry Appeal.

Donations taken to Holt Community Hub are distributed to other services such as St Benedicts in Queanbeyan, Club 12/25 in Braddon and CYFSP (Child, Youth and Family Services Program) in Woden.

Anglicare also has a number of emergency food relief pantries in regional centres across NSW. When the pantry at any of those centres becomes critically low, we are able to use Pantry Appeal donations to meet the urgent need.